

# **IROQUOIS GAS TRANSMISSION SYSTEM, L.P.**

2020 Northeast Gas Association  
Pre-Winter Briefing

November 5, 2020

Christopher K. Stutz – Sr. System Controller



# Iroquois Gas Transmission System

## Operations in 1991

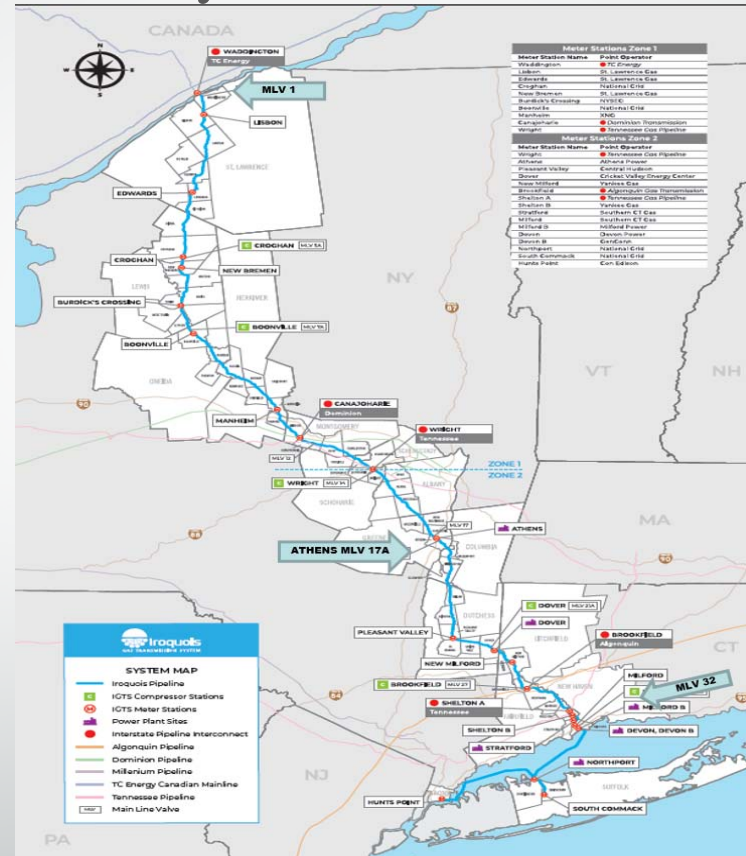
- Headquarters in Shelton, CT
- 83 FT employees
- 24/7 Gas Control monitoring

Physical Receipt Capability = 1.7 Bcf/d

- TC Energy = 1.20 Bcf/d
- DTI = 0.08 Bcf/d
- AGT = 0.41 Bcf/d

## Physical Interconnects

- Waddington, NY – TC Energy
- Canajoharie, NY - DTI
- Wright, NY – TGP 200 line
- Brookfield, CT – AGT
- Shelton, CT – TGP 300 line



# Historical Peak Day/Physical

	Location	Dt/d	Date
Supply	Waddington	1,221,545	2/6/15
	Canajoharie	130,808	03/01/19
	Brookfield	432,790	11/07/17
	Waddington/Canajoharie/Brookfield	1,554,129	3/6/19
TGP	Wright TGP	410,471	3/3/16
	Wright & Shelton TGP	509,128	3/3/16
NYF System	South Commack	563,262	2/14/16
	Hunts Point	356,830	1/20/09
	Northport	274,007	8/12/20
Total Physical Deliveries – All Meters		1,564,045	3/6/19

# CoVid-19 Pandemic Operations

- Operating out of split Control Rooms
- Different locations
- Only Controller allowed in room
- 3 Gas Control “Teams” to minimize exposure
- One working out of back up site on 4X4 Schedule
- One working out of Primary site on 4X4 Schedule
- Remaining three Operator Qualified working from home-providing Support and Stand By Coverage
- Scheduling work from home/in office two days a week when Gas Control working out of back up site
- Daily TEAMS Meetings

# Maintenance & Summer Operations

## **Maintenance completed:**

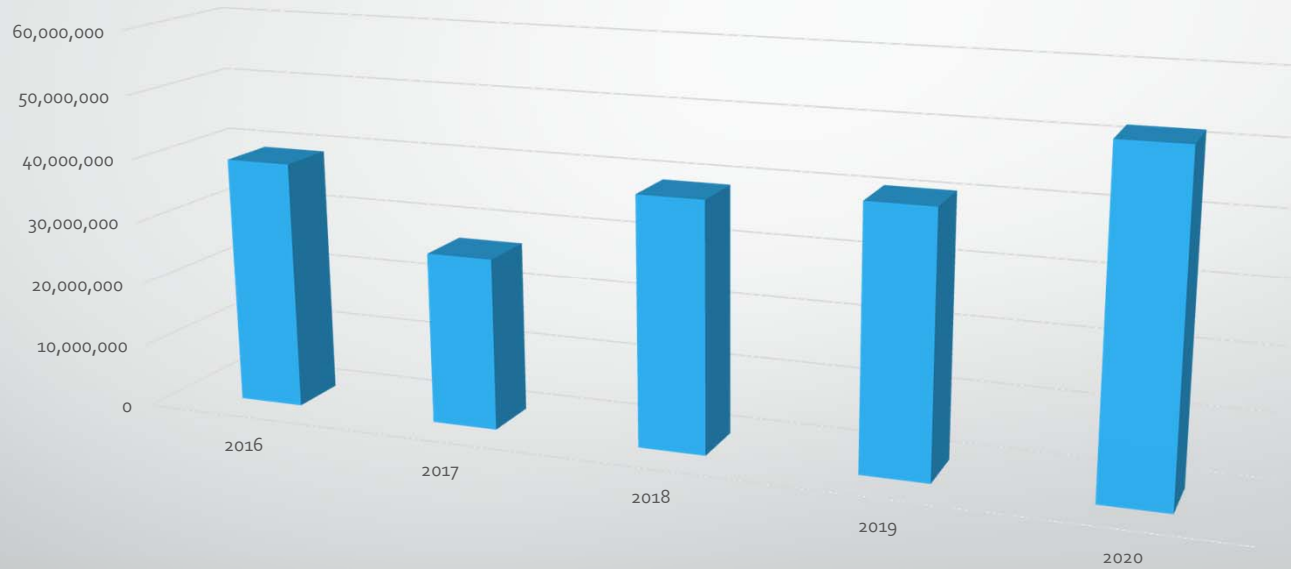
- Brookfield A1 change out
- All compressor station annual maintenance and upgrades
- In Line inspections for Devon and Stratford Laterals
- VSAT Dish and Modem Replacement in Progress (58 sites)

## **Summer Operations:**

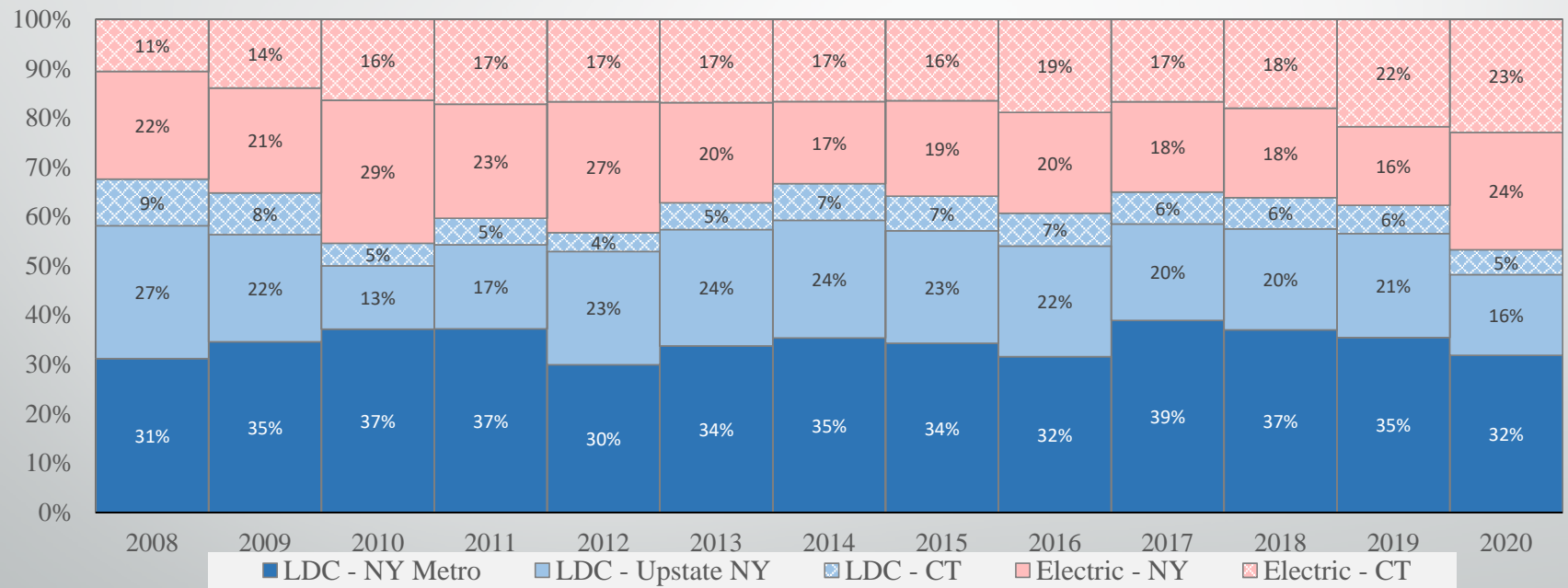
- At capacity at Brookfield AGT interconnect
- Waddington TC interconnect utilized on Warmer days
- Near or at capacity through 17A
- Power Generation load increased nearly 25%

# Zone 2 Summer Generation Loads

Z2 Generation Load June-August (Dth)

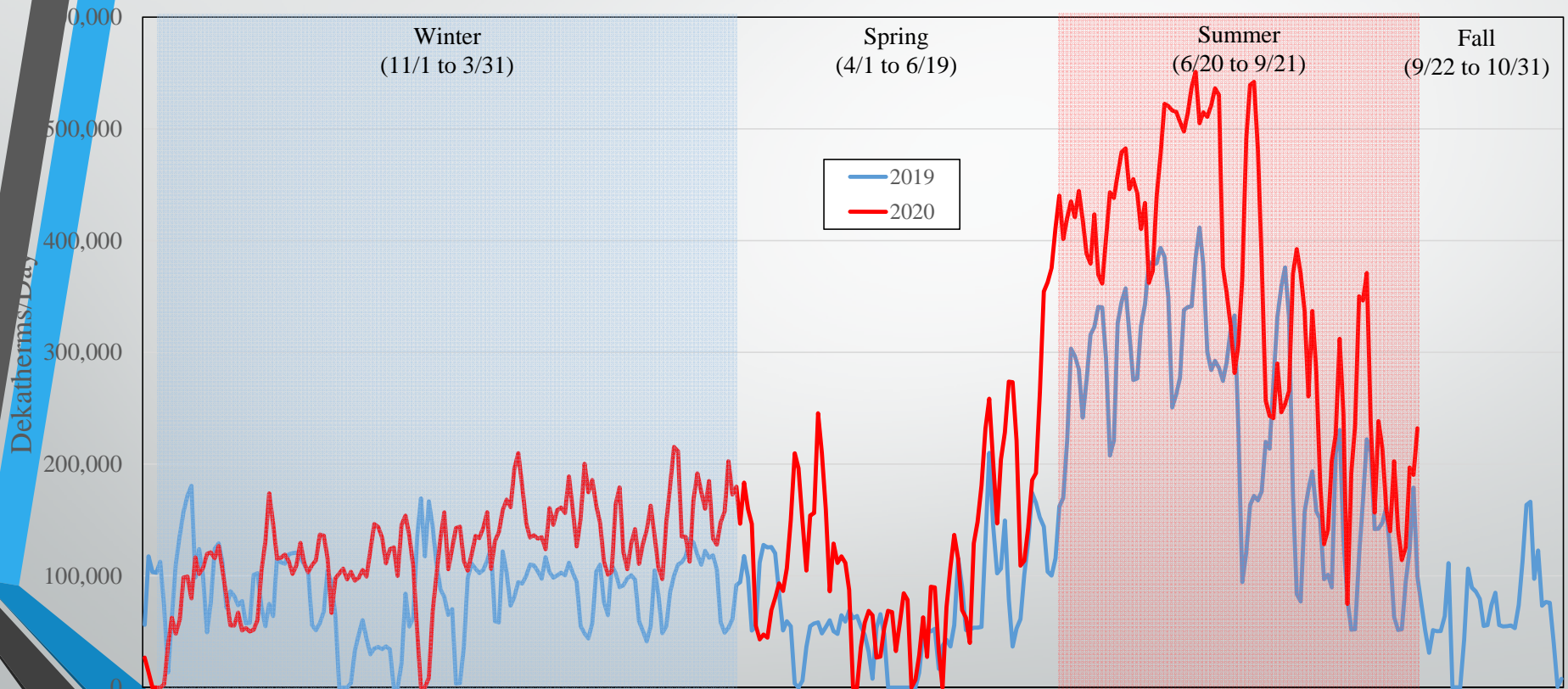


# Physical Delivery Locations





# NY Electric Generation Physical Deliveries



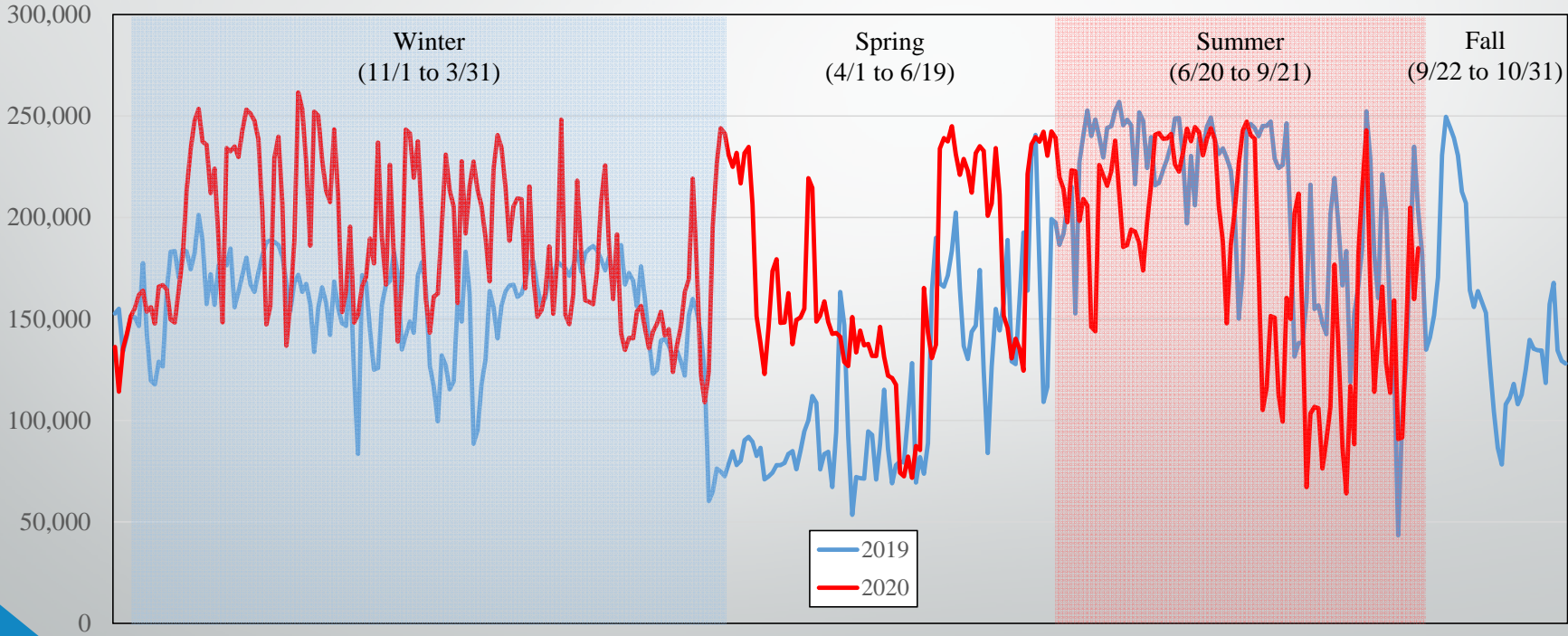
## Cricket Valley Energy Center (CVEC)

- Natural-gas fired plant (175,000 Dt/d)
- 1,100 MW combined cycle gas turbine located in Dover, NY
  - IGTS 500' 12" Lateral
  - Now in service





# CT Electric Generation Physical Deliveries



# 2020/2021 Winter Operations Update

## **2020/2021 Winter Operations Update**

- Fully Subscribed
- Scheduling to Mirror Winter 2019/2020

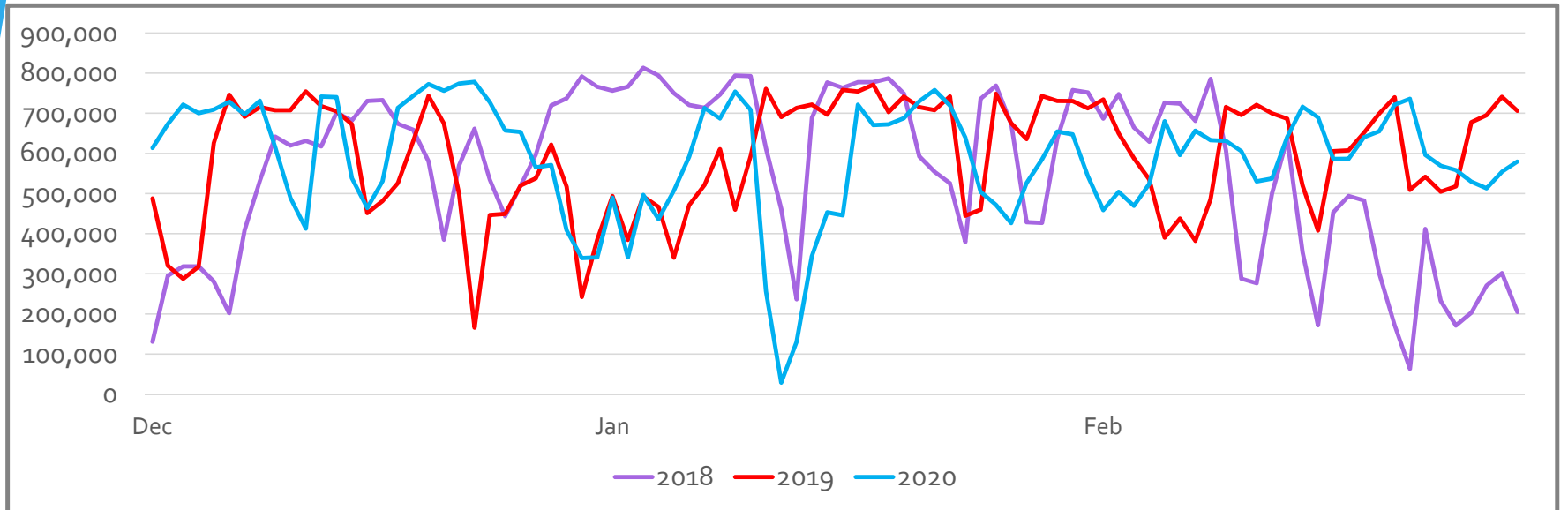
## **Restrictions/Allocations**

- MLV 1, MLV 17A, MLV 32
- Restrictions/Critical Notices/OFO's

## **Maintenance**

- Athens Lateral ILI 4/21
- Brookfield A2 change out 4/21
- Croghan A2 change out 5/21

## Physical Flow through 17A – Dec/Jan/Feb (Dth)



# Summary

- Iroquois continues to provide safe and reliable operations.
- Summer Operations – Iroquois saw increased Zone 2 demands due to increased generation loads and was sealed through MLV 17A on peak days.
- Winter Operations – Iroquois is fully subscribed with restrictions/allocations possible at MLV 1, MLV 17A, and MLV 32.

Thank you

For further questions:

Christopher Stutz

Sr. System Controller

Email: [Christopher\\_stutz@iroquois.com](mailto:Christopher_stutz@iroquois.com)

Cell:

(203) 520-7129

