

IROQUOIS GAS TRANSMISSION SYSTEM, L.P.

Northeast Gas Association
Regional Market Trends Forum

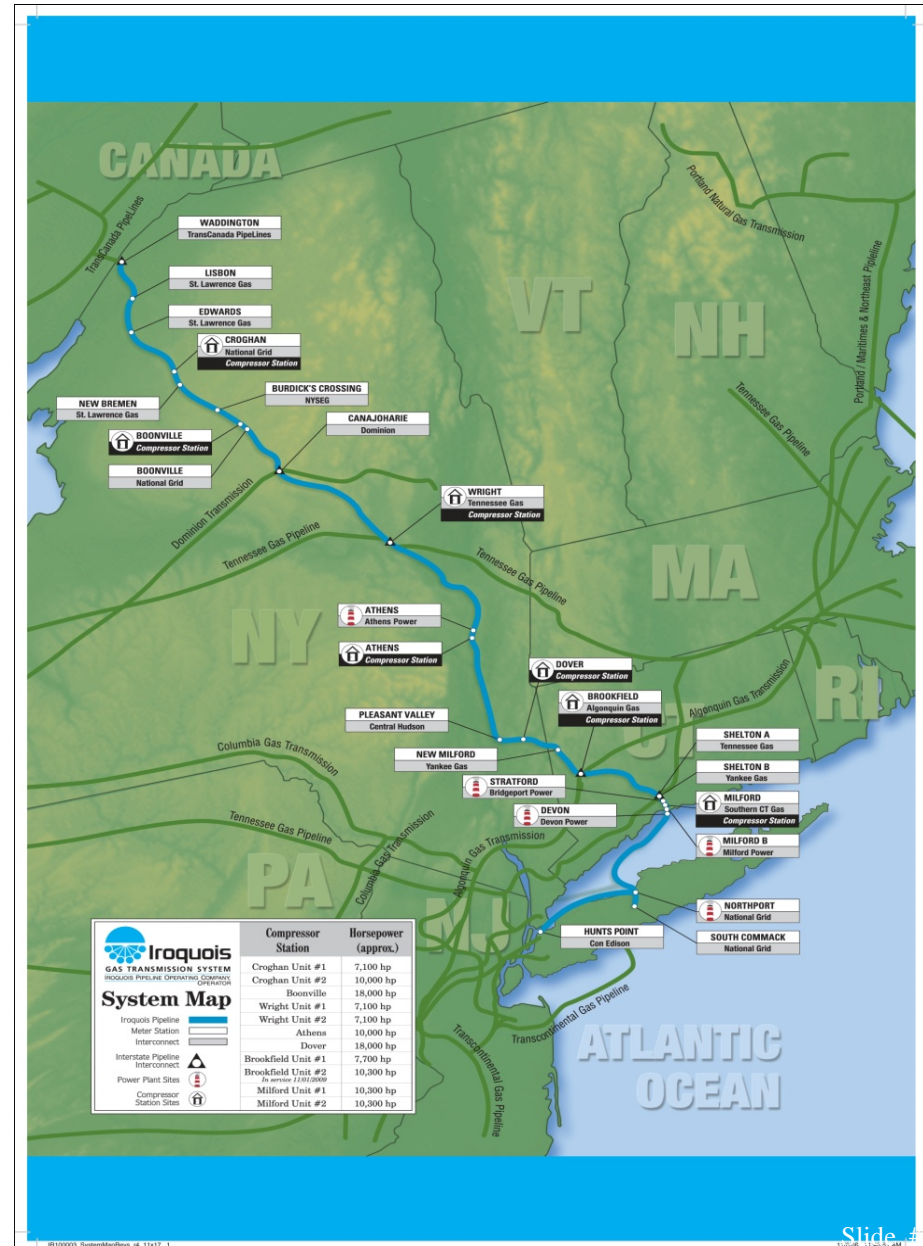
Iroquois' Pathway Ahead

May 4, 2017

Hartford, CT

Iroquois Gas Transmission System

- Commenced Operations in 1991
- Primary Markets
 - New York City
 - Long Island
 - Connecticut
- 1.6 Bcf/d Physical Receipt Capability:
 - TransCanada = 1.2 Bcf/d
 - Algonquin = 0.4 Bcf/d
- Piping
 - 416-mile of 30" and 24" pipeline
 - MAOP = 1440 psig
- Pipeline Interconnects:
 - TransCanada
 - Dominion
 - Tennessee (200 and 300 lines)
 - Algonquin
- 7 Compressor Stations - 106,400 HP
- Mainline Interzone Rate = ~~\$0.37/Dt~~
 $\$0.35 \gg \$0.33 \gg \$0.295/\text{Dt}$
 (Max. Fuel = 1%)
- Eastchester Rate = ~~\$0.635/Dt~~
 $\$0.455 \gg \$0.455 \gg \$0.395/\text{Dt}$
 (Max. Fuel = 4.5%)



Iroquois' Infrastructure Projects

SUPPLY *Push*

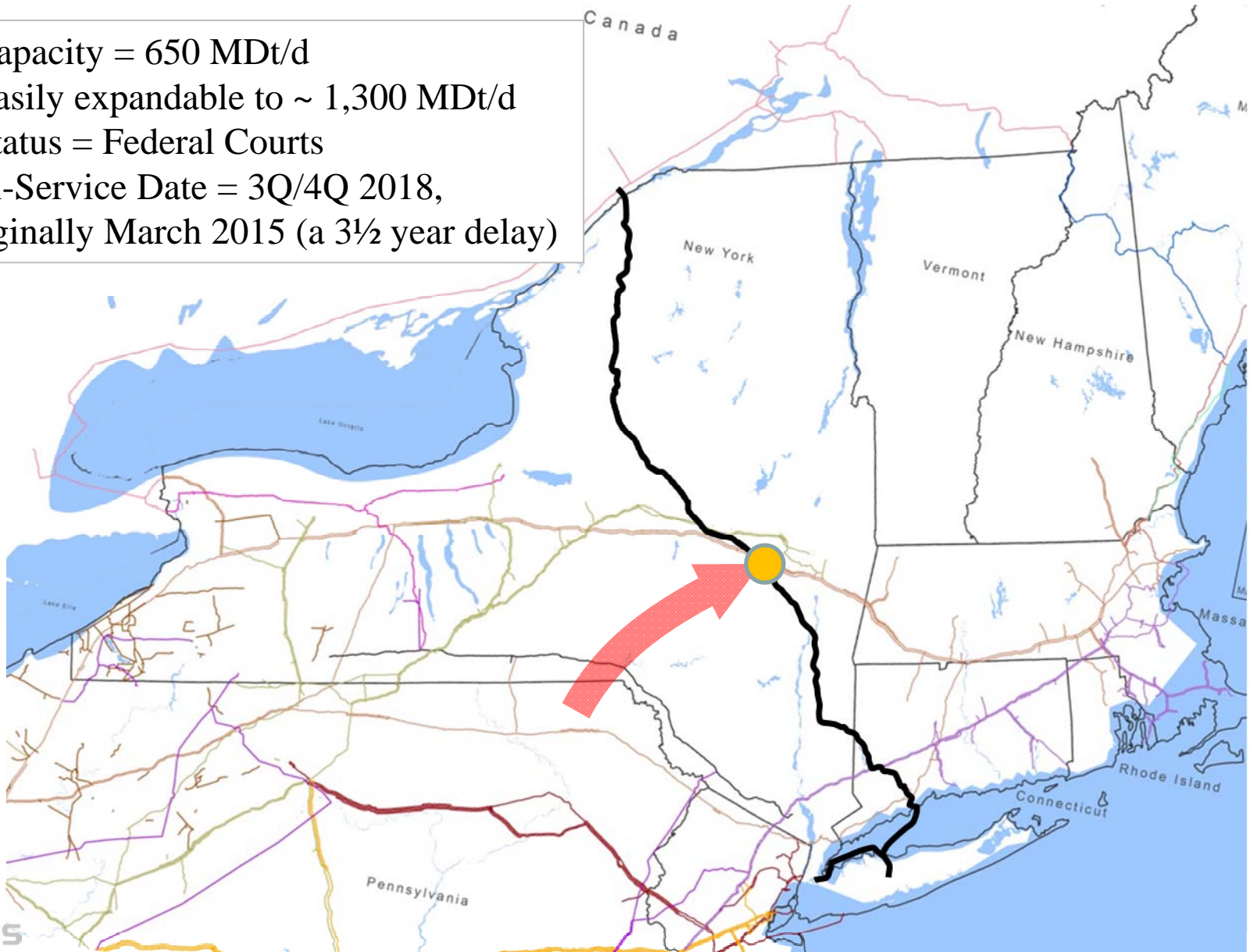
- Constitution Pipeline / Iroquois' WIP Project
- Dominion's New Market Project
- XNG's Manheim Project

DEMAND *Pull*

- Iroquois' Flow Reversal Expansion
 - 55,000 Dth/d exported to Canada
- Electric Generation
 - Cricket Valley, 1000 MW
 - PSEG Harbor Station, 460 MW

Constitution / Wright Interconnect Project

- Capacity = 650 MDt/d
- Easily expandable to ~ 1,300 MDt/d
- Status = Federal Courts
- In-Service Date = 3Q/4Q 2018, originally March 2015 (a 3½ year delay)



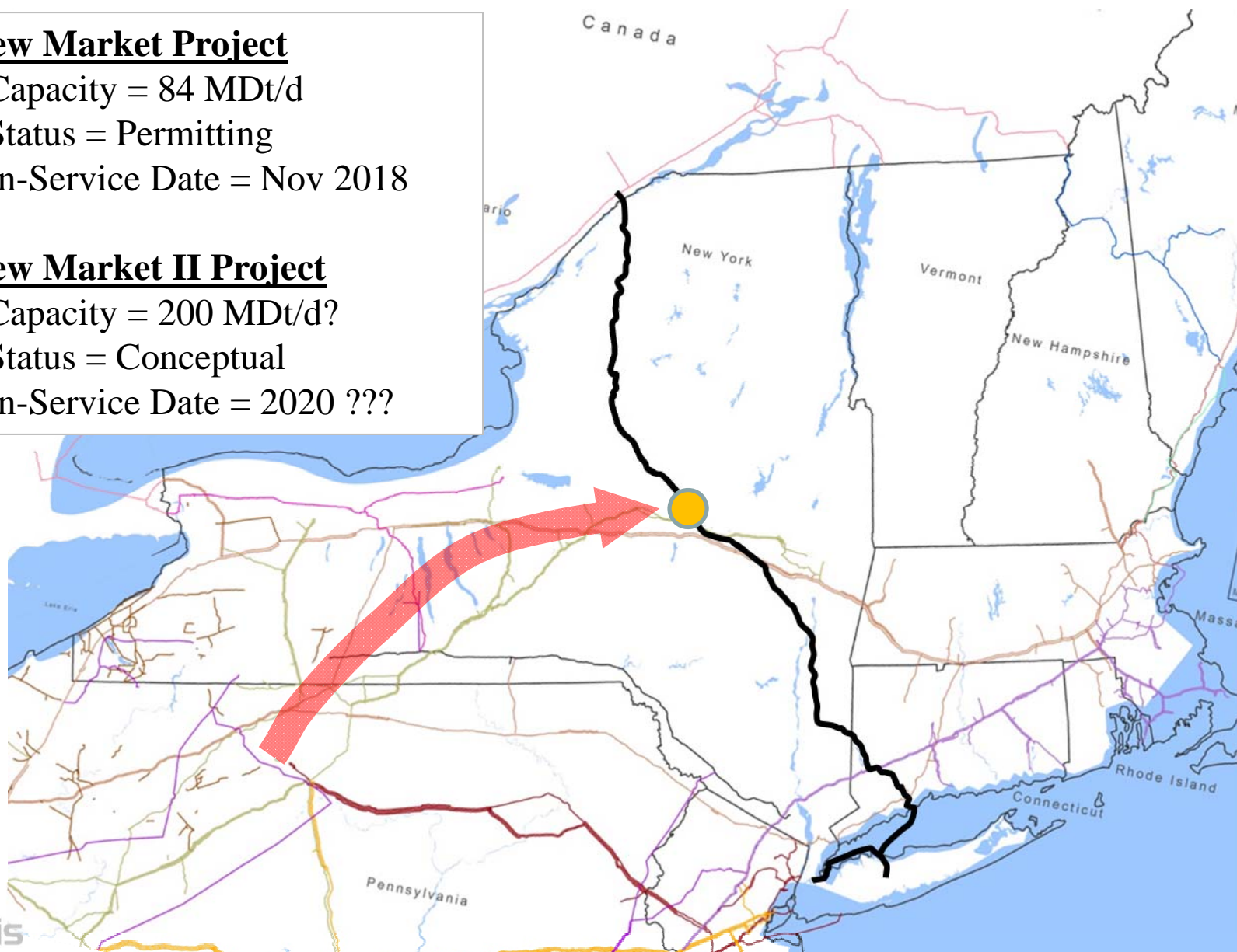
Dominion Projects

New Market Project

- Capacity = 84 MDt/d
- Status = Permitting
- In-Service Date = Nov 2018

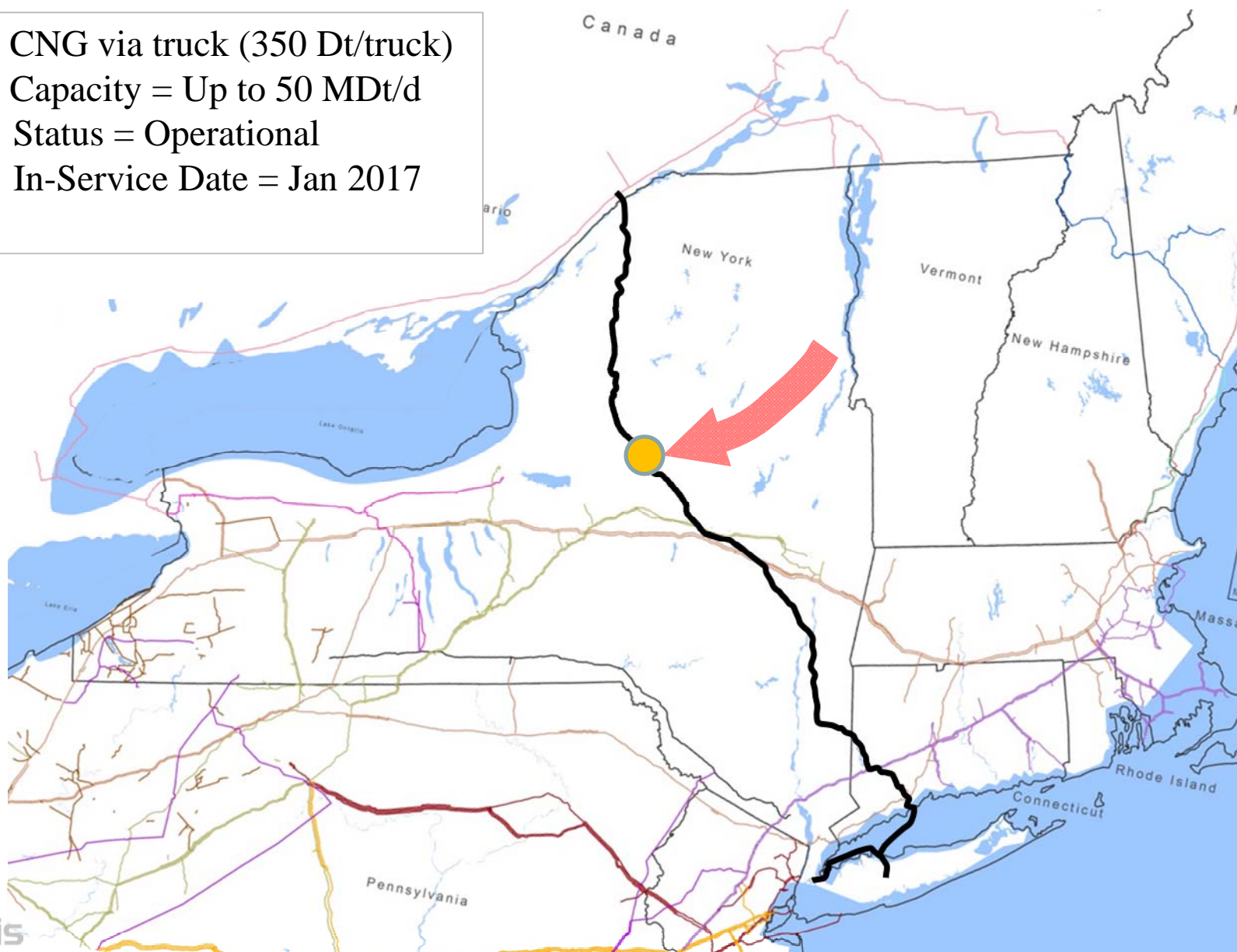
New Market II Project

- Capacity = 200 MDt/d?
- Status = Conceptual
- In-Service Date = 2020 ???



XNG Manheim Receipt Project

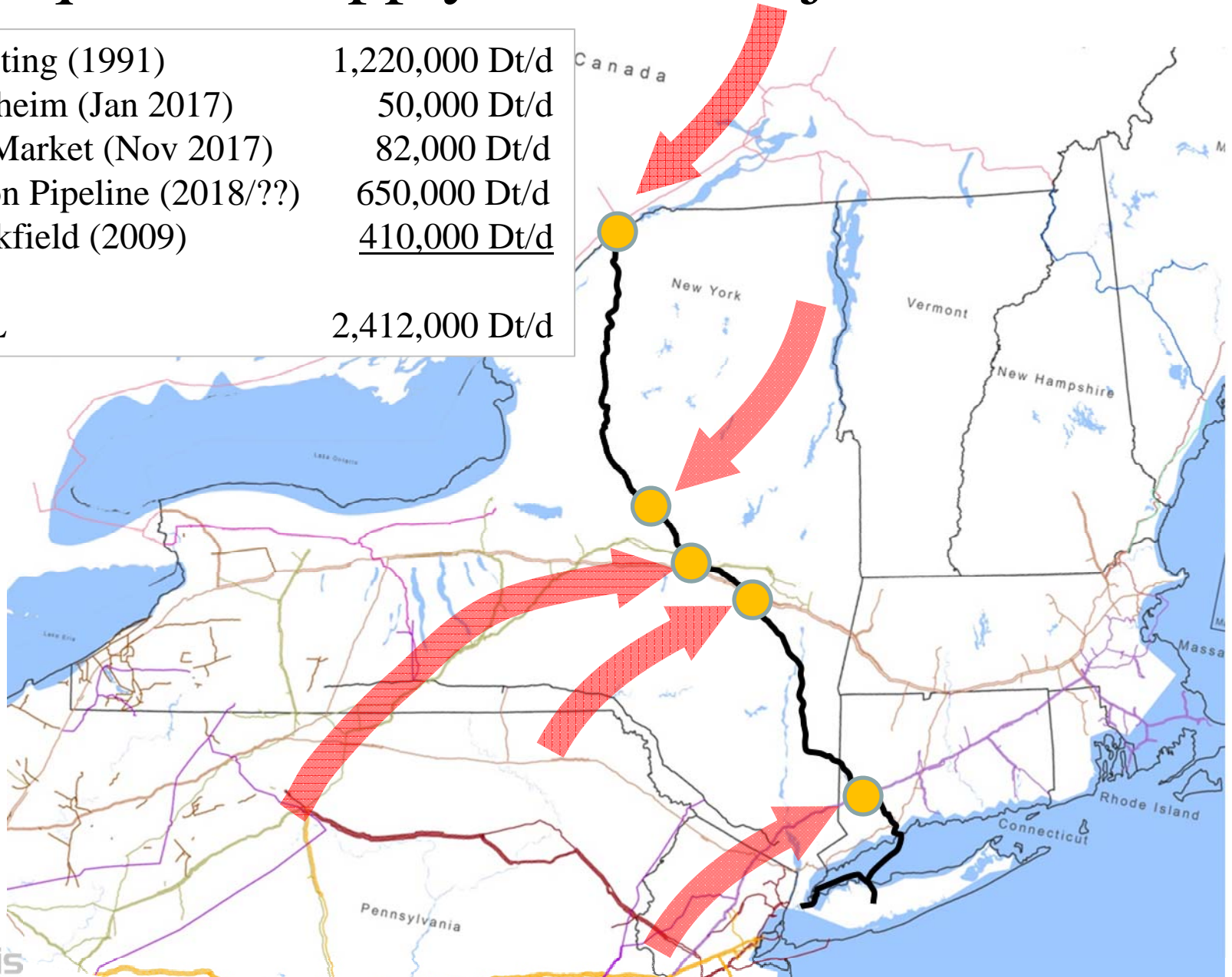
- CNG via truck (350 Dt/truck)
- Capacity = Up to 50 MDt/d
- Status = Operational
- In-Service Date = Jan 2017



Iroquois – Supply PUSH Projects

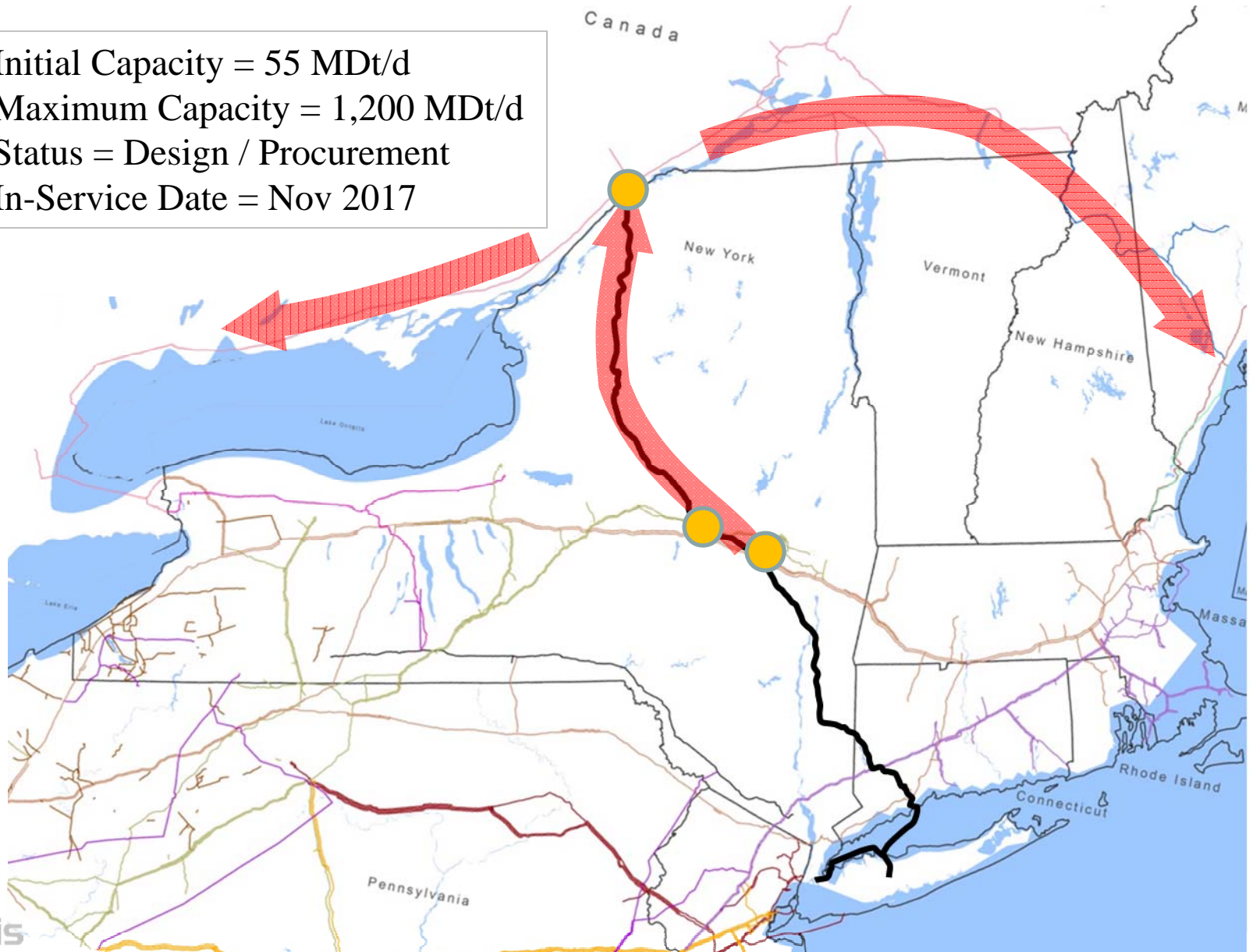
• TCPL Existing (1991)	1,220,000 Dt/d
• XNG Manheim (Jan 2017)	50,000 Dt/d
• DTI New Market (Nov 2017)	82,000 Dt/d
• Constitution Pipeline (2018/??)	650,000 Dt/d
• AGT Brookfield (2009)	<u>410,000 Dt/d</u>

TOTAL 2,412,000 Dt/d



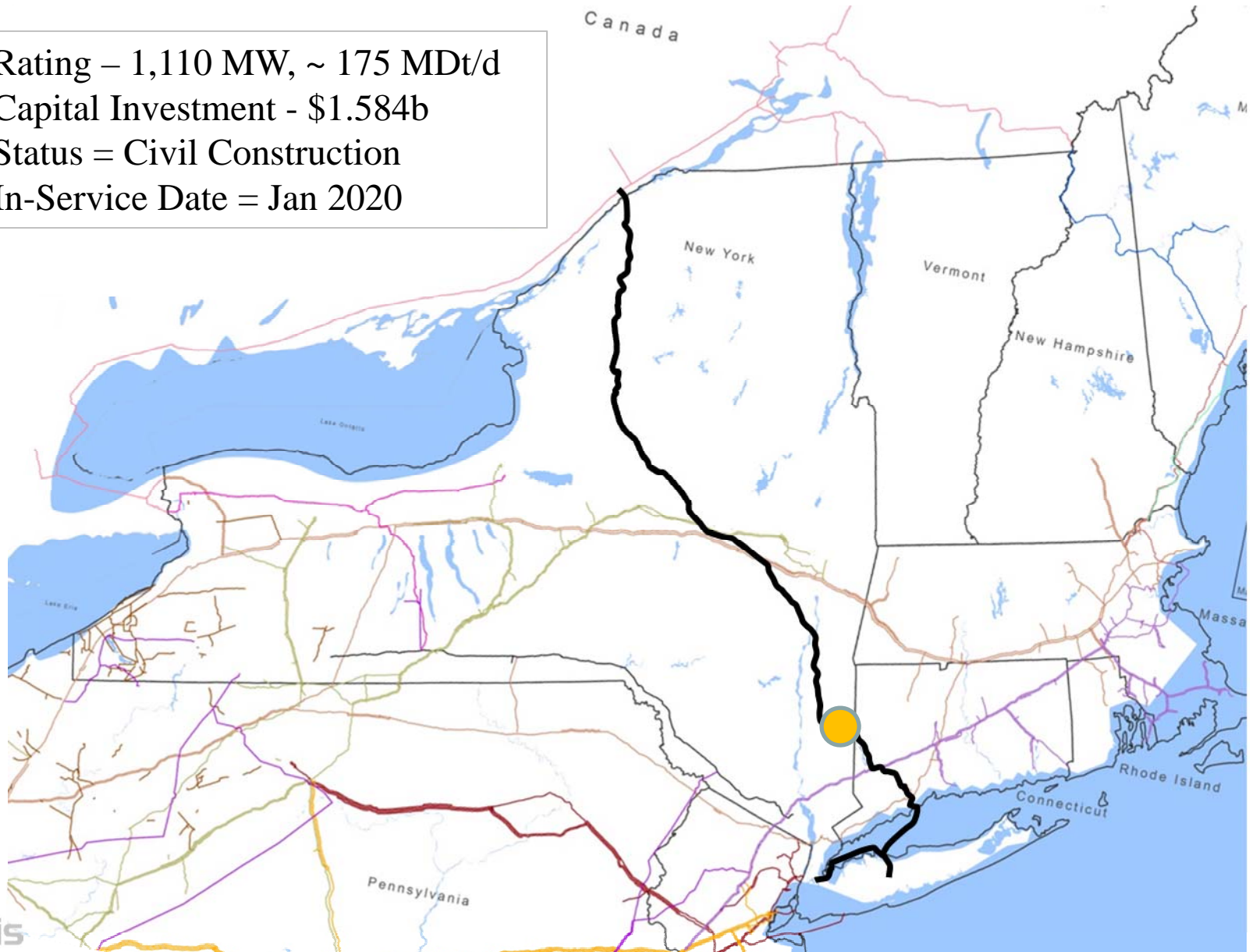
Iroquois - South to North (SoNo **Lite**) Project

- Initial Capacity = 55 MDt/d
- Maximum Capacity = 1,200 MDt/d
- Status = Design / Procurement
- In-Service Date = Nov 2017



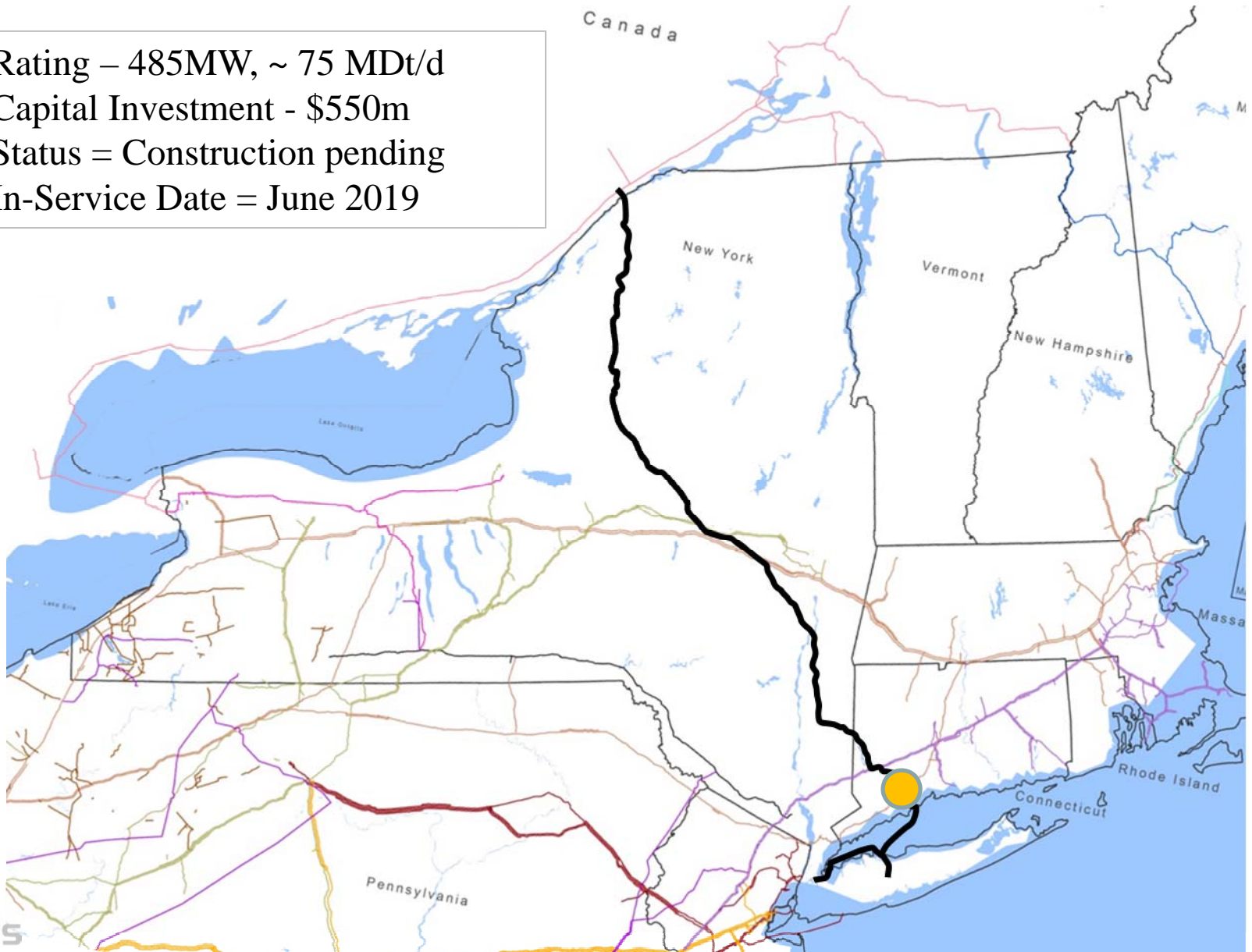
Cricket Valley Energy Center – Dover, NY

- Rating – 1,110 MW, ~ 175 MDt/d
- Capital Investment - \$1.584b
- Status = Civil Construction
- In-Service Date = Jan 2020



PSEG's Bridgeport Harbor Station – Bridgeport, CT

- Rating – 485MW, ~ 75 MDt/d
- Capital Investment - \$550m
- Status = Construction pending
- In-Service Date = June 2019



Thank You

