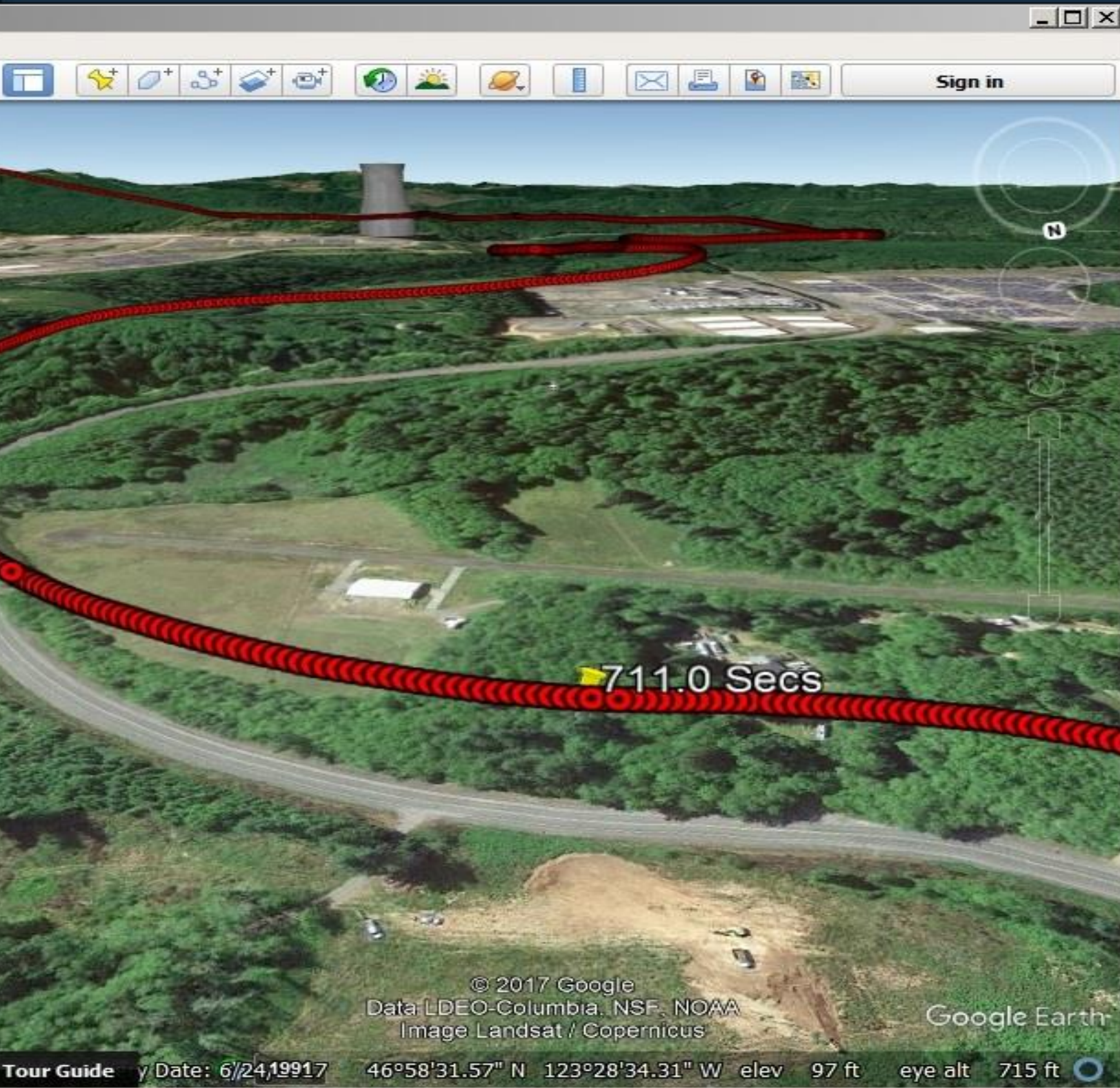


ALMA aerial leak
detection





Remote GeoSystems Google Earth Extension - Pro

File Options Google Earth Advanced Window Help

Video Viewer 11:51 Lat: 46.97699 | Long: -123.47593 | UTC Time: 3

Video Viewer 11:52 Lat: 46.97694 | Long: -123.47573 | UTC Time: 30.10.17 18:57:15 | Speed

Video Viewer 11:52 Lat: 46.97694 | Long: -123.47573 | UTC Time: 30.10.17 18:57:15 | Speed

Media Browser

DVR_Recording_REC DVR_Recording_REC

Select to Sort By... Show Detail

Media Browser Map Navigation

Map Viewer

Client Version: 3.0: Logged in as jdahlke

Admin | Search (OFF) | Help | Logout

Media Viewer



GPS Info	
Map Center:	33.83652°, -84.34891°
Cursor Location:	33.55131°, -84.25160°
Map Height:	48.36 mi / 77.82 km
Map Width:	94.62 mi / 152.28 km
Map Extent:	34.18602°, -85.03281° 33.48701°, -83.66501°



68 photos in selected timeframe: Mon 01/01/2001 at 05:00:00 AM UTC - Sat 11/22/2008 at 02:11:29 AM UTC

Results



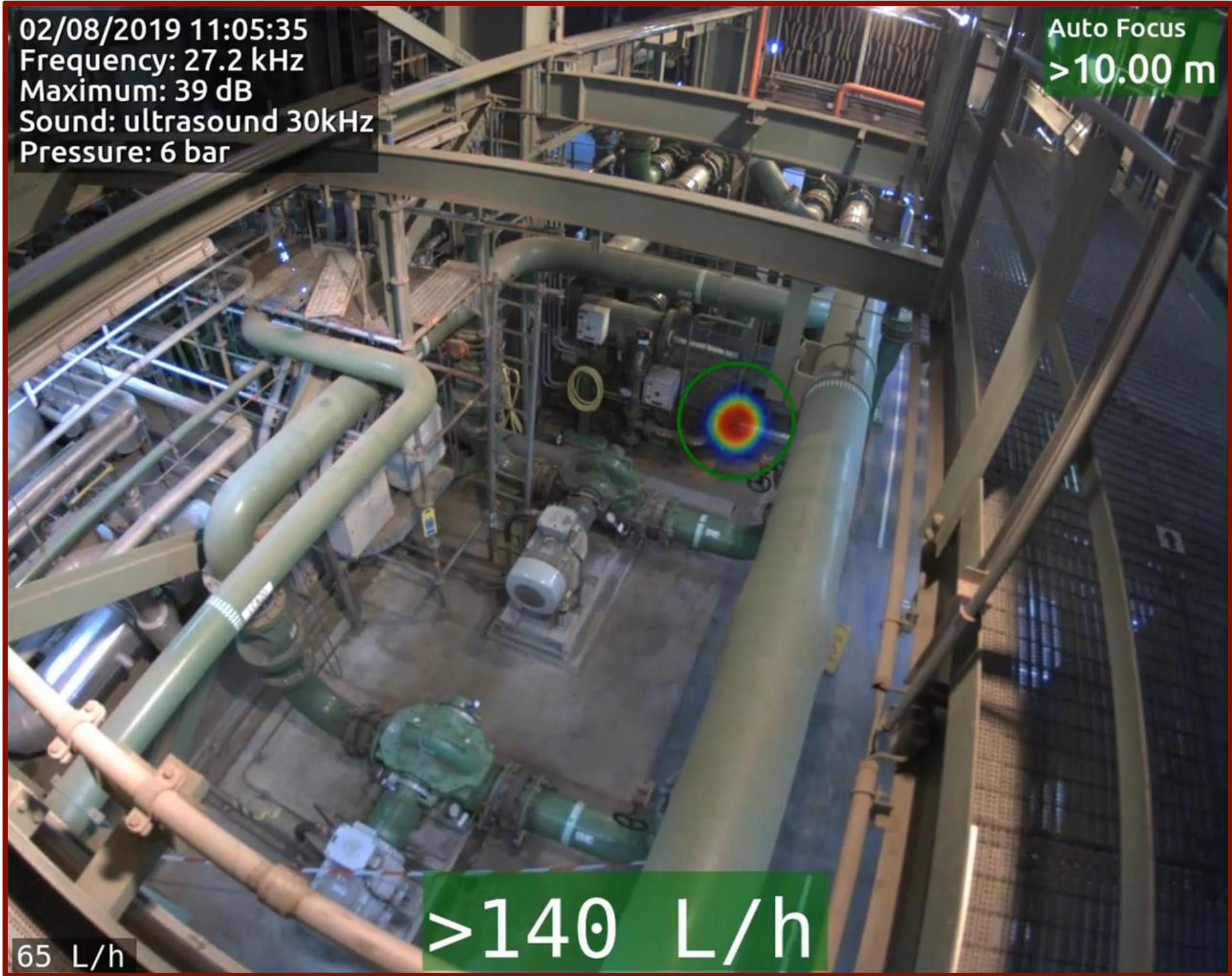
© 2020 Google

Google Earth

Distran Acoustic Leak Detection with SCHF real-time quantification



Ultrasound imaging pinpoints gas leaks from the sounds they emit, at a distance



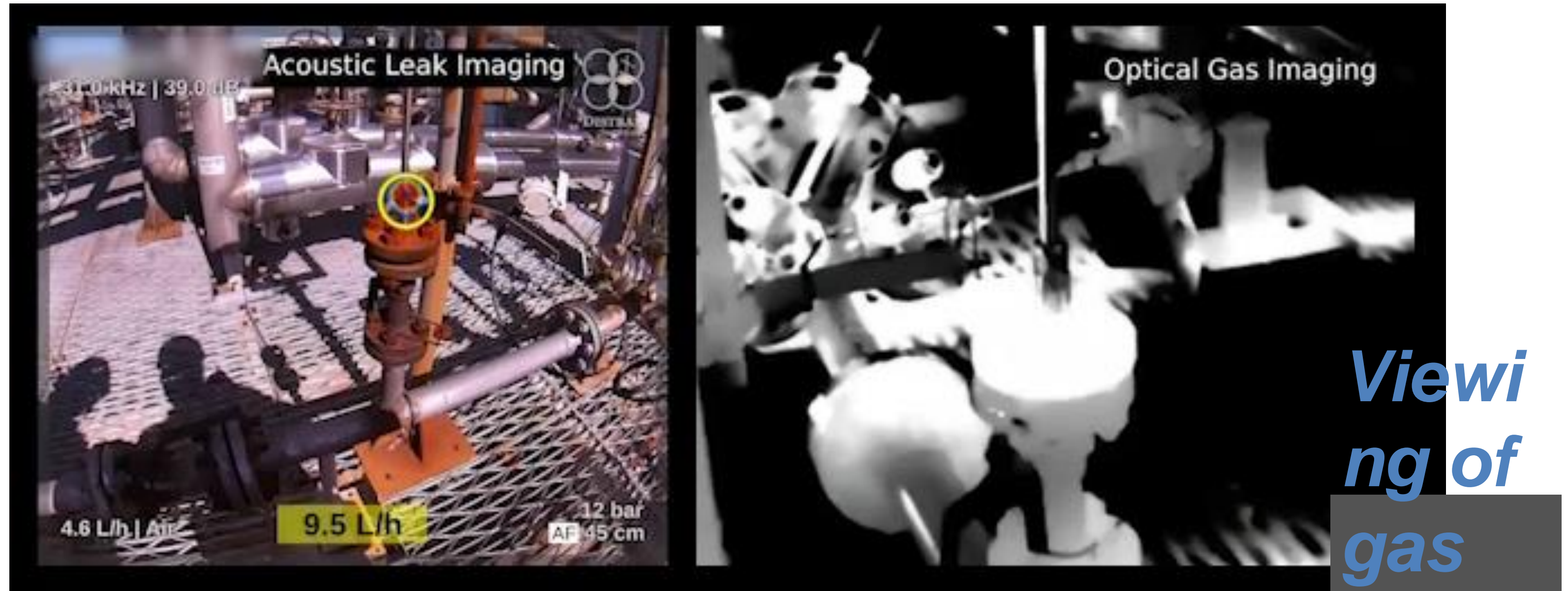
How does it work



Ultra Pro pinpoints
ultrasounds sources
such as gas leaks

NON-CONTACT LEAK LOCATION TECHNIQUES

Same leak - 2 detection methods





PERGAM GROUP

Laser Mounted Drone Methane Leak Detection



Era of Drone Technology

In 2016, we started developing a lightweight version of the remote laser detector.

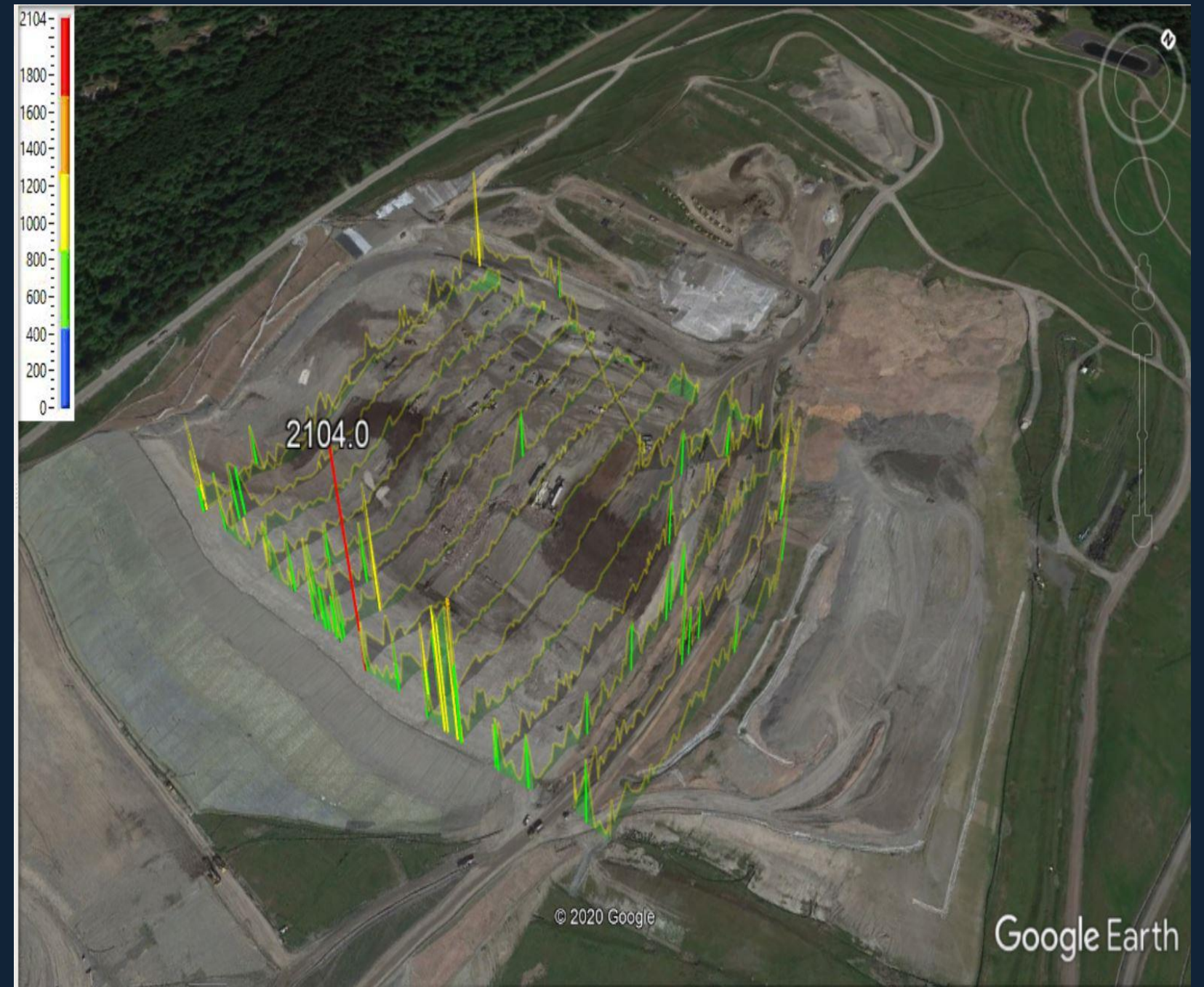
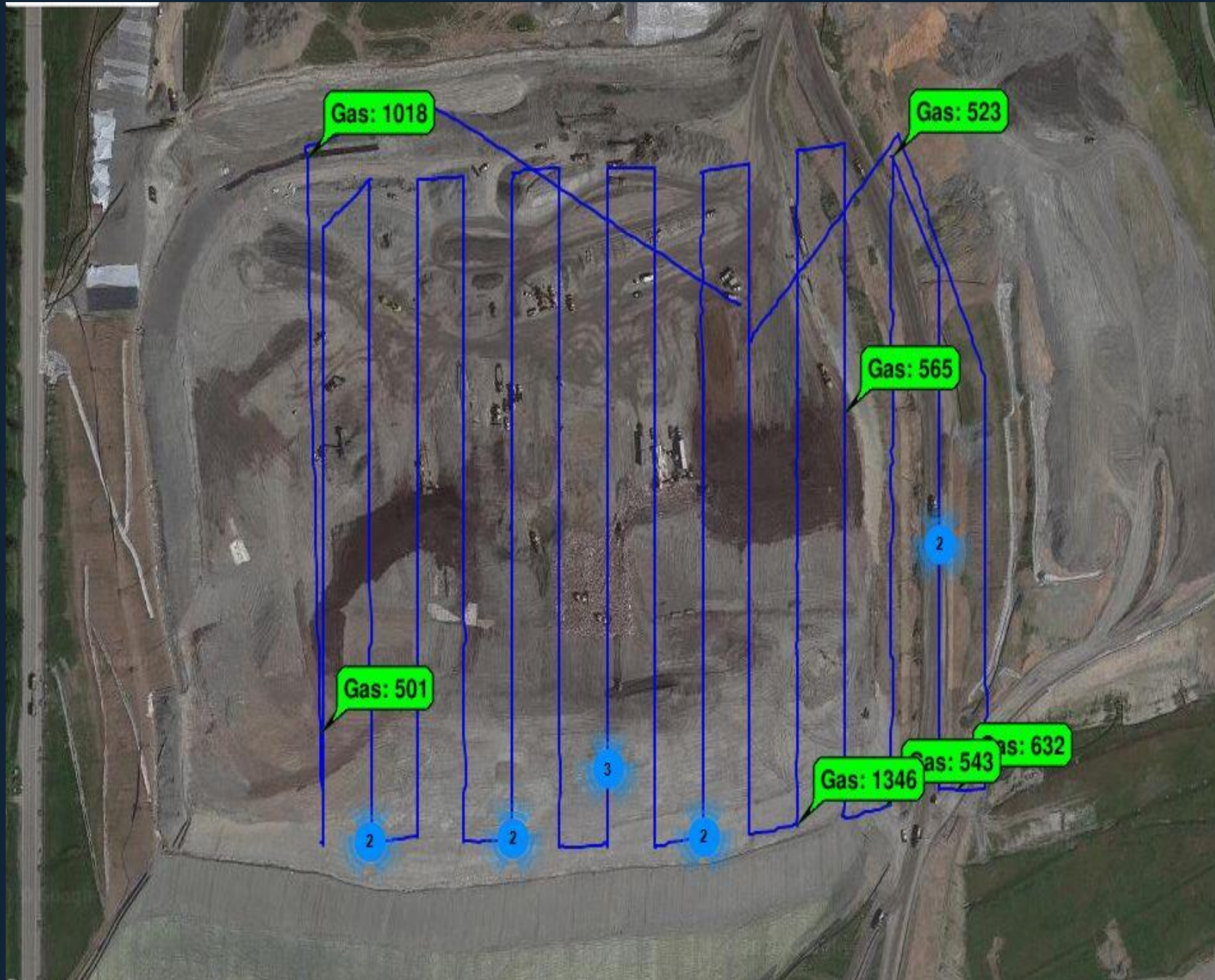
- 10 minutes to setup
- Flight path is set using Google map
- Flight Speed ~ 10 miles/hour
- Flight time — up to 5½ hours
- Flight Height — up to 300 feet
- Survey 1000 ft² in 5 minutes
- No manual control needed









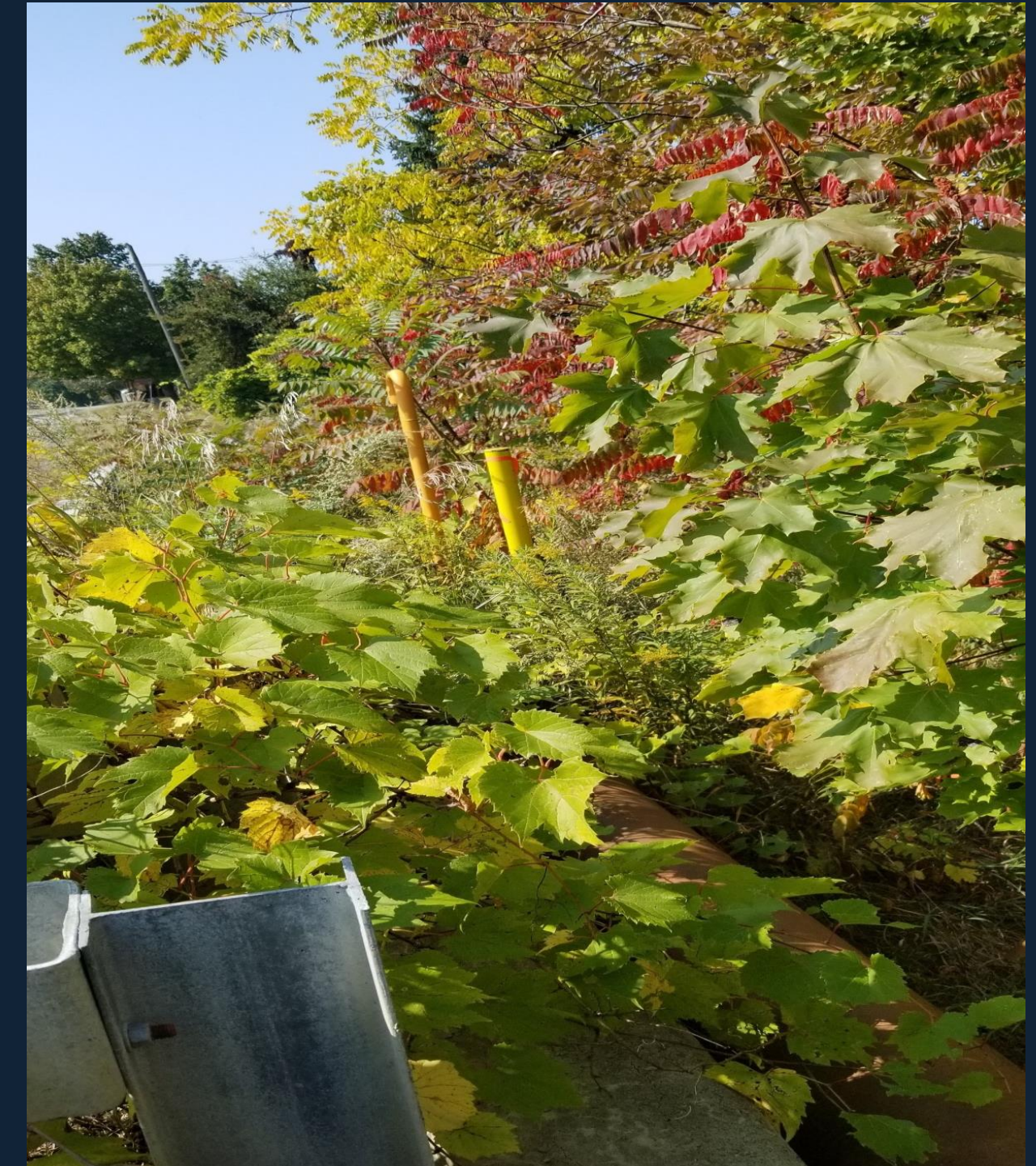


Laser Methane mini Intrinsic (LMm-NE)

- Developed by Tokyo Gas Engineering Solutions Corporation
- Manufactured by Gastar Co., Ltd. in Tokyo, Japan
- Distributed by Pergam Technical Services



SA3C32A-NE



LMS Mini







MADE Gas Tracker Non-Tracer Wire



Sky Laser Remote Intrusion Protection



Selma Dome





285

4x4

F150

Thank you for your time and consideration

Johan Wictor

Cell: 425-503-08127

Office: 425-251-1483

E-mail: jwictor@pergamusa.com