

IROQUOIS GAS TRANSMISSION SYSTEM, L.P.

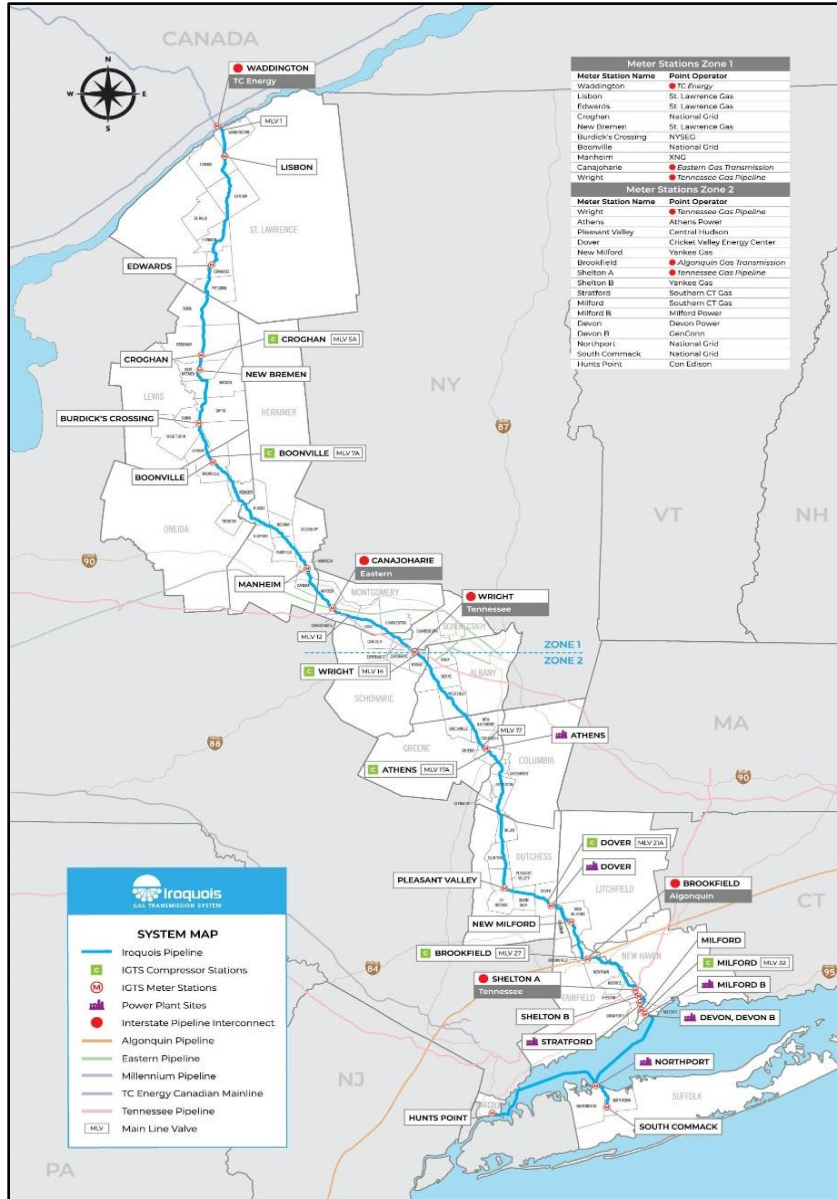
**2022 Northeast Gas Association
Pre-Winter Briefing**

November 17, 2022

John Esposito

Director-Gas Control, Scheduling & System Operations

Iroquois Gas Transmission System, L.P.



Ownership

- BHE GT&S LLC = 50%
- TC Energy = 50%

Commenced Operations in 1991

- Headquarters in Shelton, CT
- 84 FT employees
- 24/7 In-house Gas Control monitoring
- Remote operated valve sites, meters and compressor stations
- Extensive aerial, ground, and "in-line" inspection programs

Primary Markets

- LI
- NYC
- CT

Design Receipt Capacity (Bcf/d)

- TC = 1.20
- XNG = 0.05
- EGT&S = 0.09
- AGT = 0.41

Piping

- 414-mile of 30" and 24" pipeline
- MAOP = 1440 psig

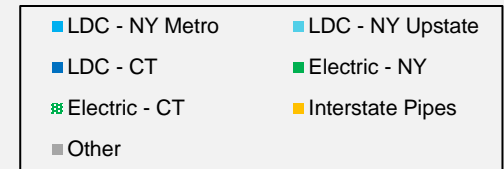
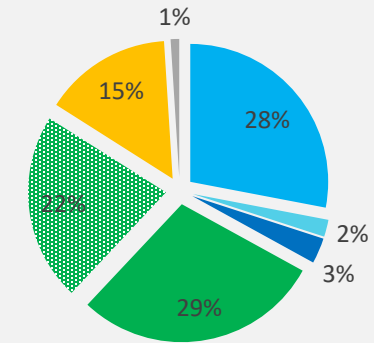
Pipeline Interconnects

- TC Energy
- EGTS
- TGP (200 and 300 lines)
- AGT

Compressor Stations

- 7 sites
- 115,900 HP

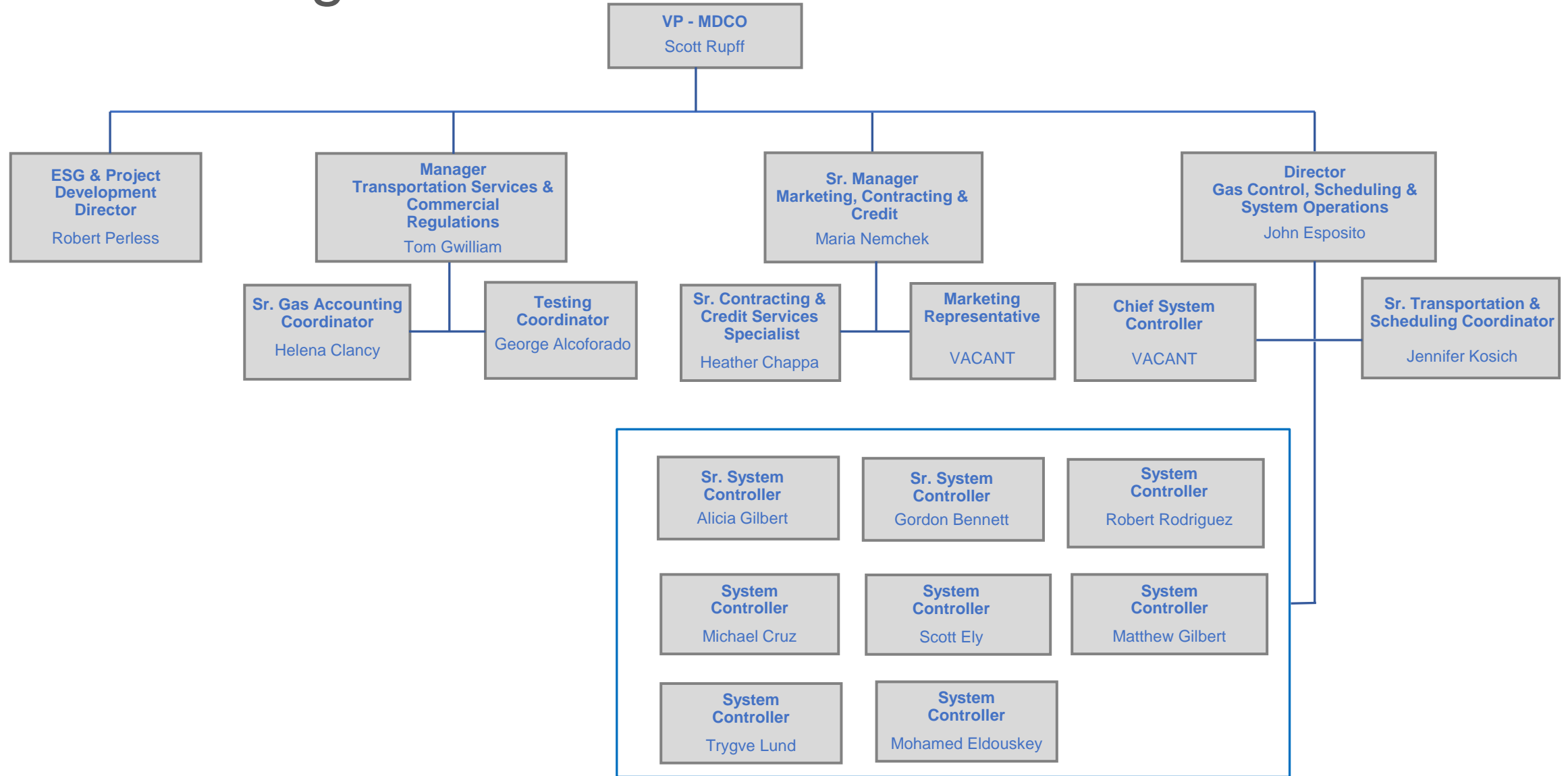
2021 Physical Deliveries by Customer Segment



100% LF Rates Effective 9/1/22

Zone	Rate (\$/Dt)
ML Z1	\$0.1625
ML Z2	\$0.1447
ML Inter-Zone	\$0.2496
Eastchester	\$0.3590

MDCO Organization



Winter Operations 2021/22

- November 1, 2021 – March 31, 2022
 - Volumes same as 2020/2021
 - Down 8% *Dec-Feb 21/22 vs. 20/21*
- 6 of 10 peak days in November & March
- TGP Wright up 6%
- 99.5% Compressor Reliability

Winter 2021/22 OFOs

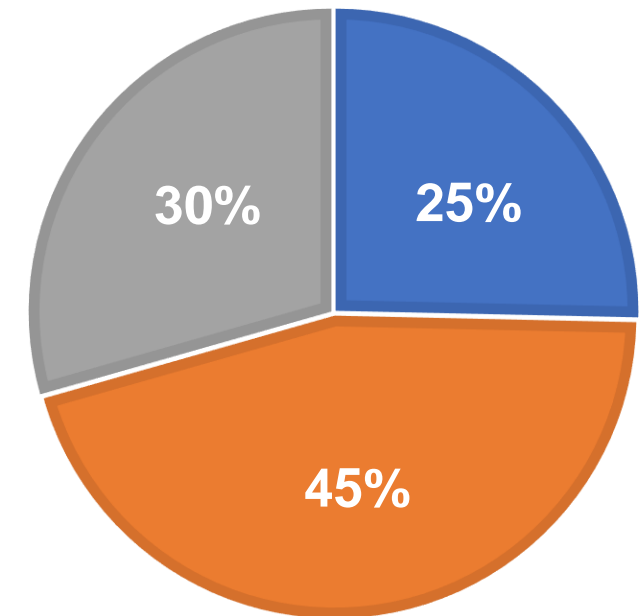
No. Issued = 13 (12 previous winter)

Total No. of Days = 69 (all d/s of MLV14)

Longest = 13 days, Shortest = 2 days

END USER DEC-JAN 21/22

■ GEN ■ LDC ■ Interconnect



Maintenance and 2022 Summer Operations

- 2022 Maintenance

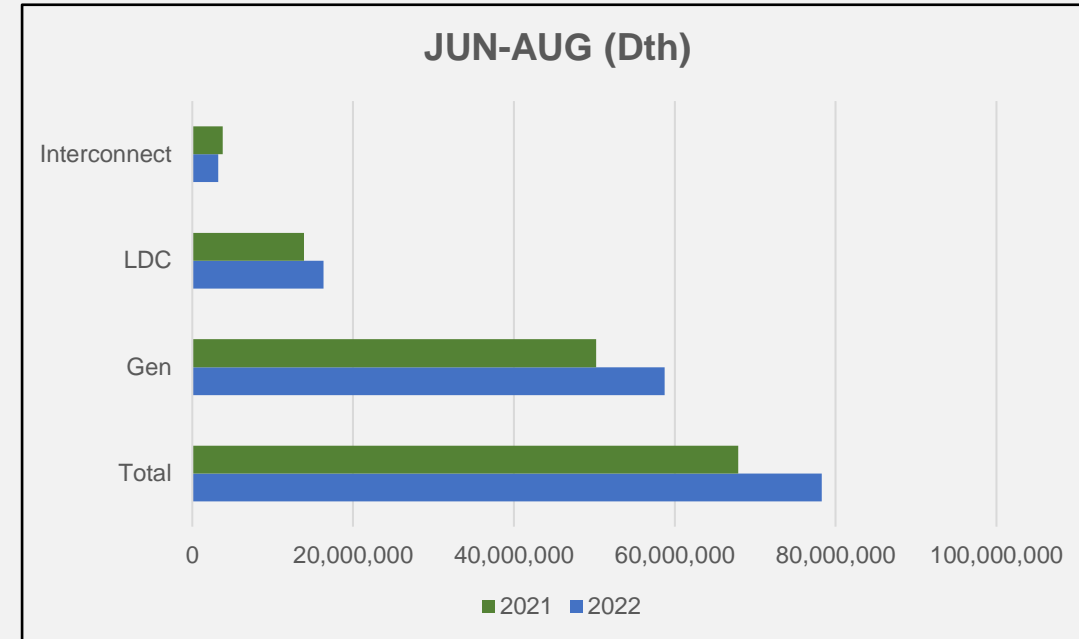
- Annual Compressor Station
 - Completed Brookfield, Boonville, Wright & Dover
 - Croghan, Athens and Milford to be completed Q4
- 24" Mainline In Line Inspection
 - No significant issues

- Summer Operations

- 75% Generation, 21% LDC, 4% Interconnects
- 15% higher Jun-Aug flows
- 1 day delivering back to Waddington vs. 21 days in 2021

- 2023 Maintenance

- 30" In Line Inspection
- EBB Annual Maintenance Posting



Summer 2022 OFOs

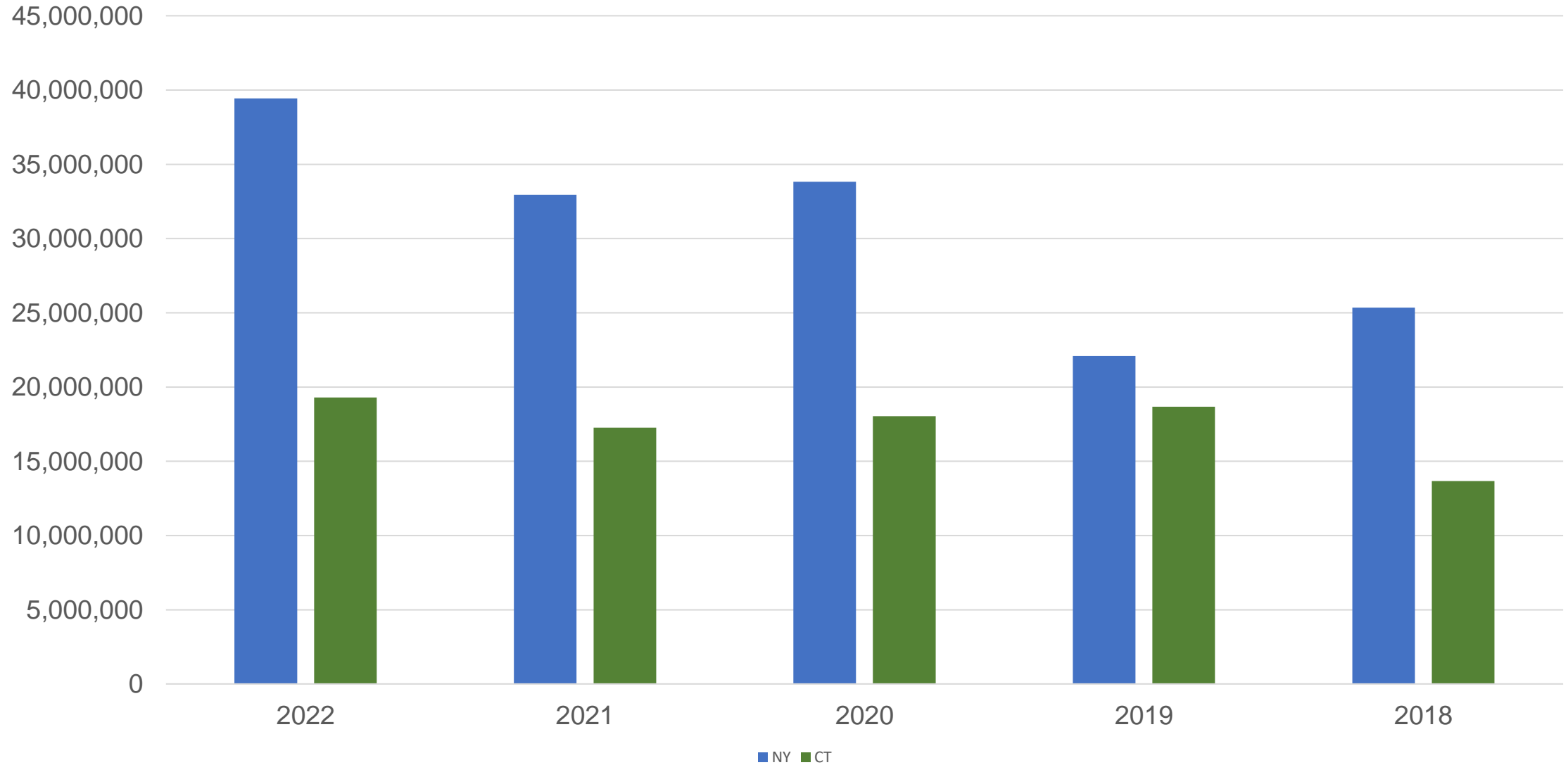
No. Issued = 3

Total No. of Days = 12 (all d/s of MLV 14)

Longest = 7 days, Shortest = 1 day

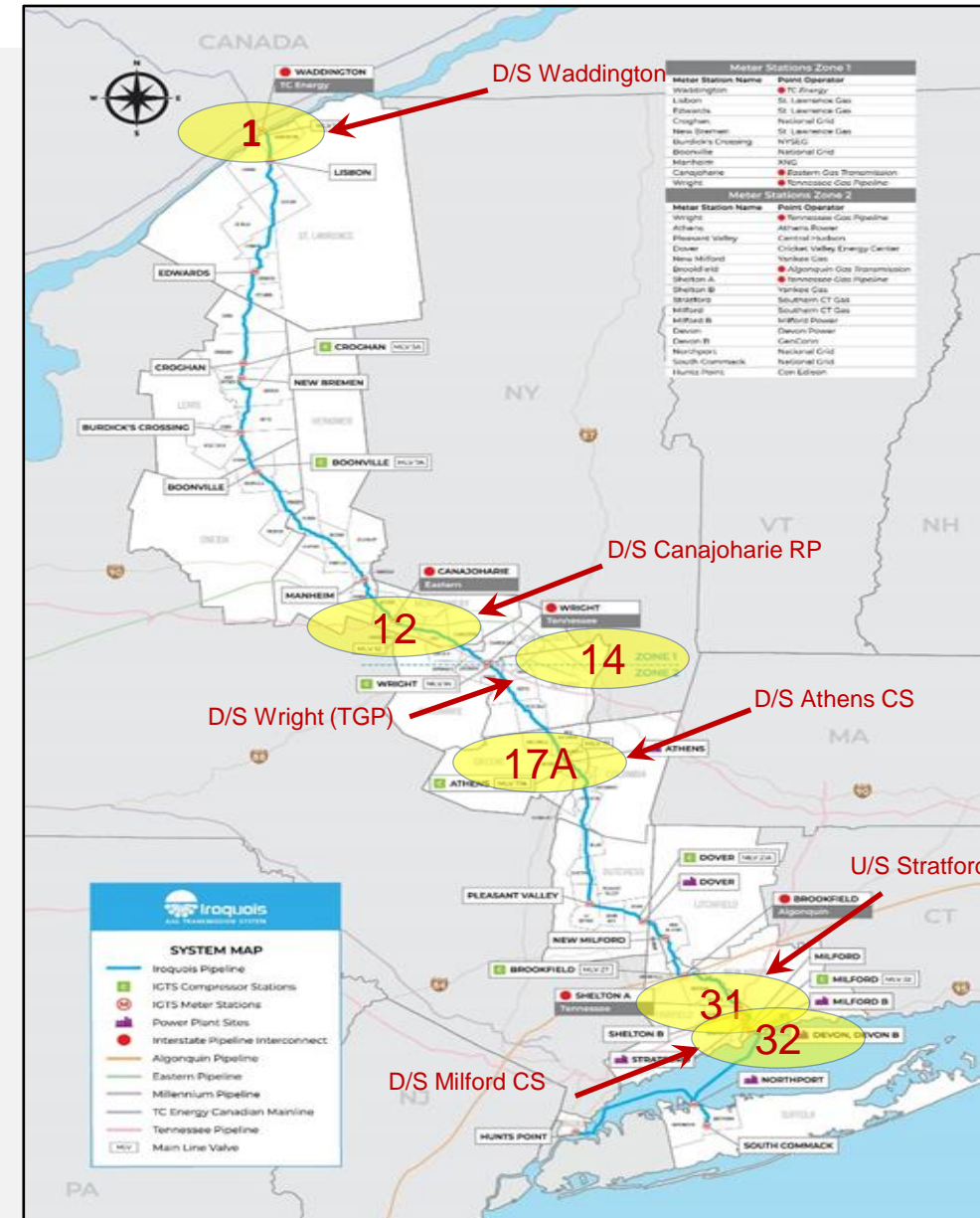


NY/CT Five-Year Generation JUN-AUG (Dth)



Winter 2022/23 Operations Update

- Fully subscribed in Z1 and Z2
- Scheduling to mirror Winter 2021/22
 - Four new hires in Gas Control
 - New nomination server project - increased speed
 - Internal IOL improvements have streamlined several processes
- Typical Restrictions/Allocations
 - MLVs 1, 12, 14, 17A, 31 and 32
 - Restrictions/Critical Notices/OFO's
 - Effects of late day changes – large swings
- Operations
 - Communication-early and often
 - Closer to capacity more important ratable takes become
 - 2023 Maintenance – No CS overhauls; In Line Inspection of 30" (Zone 1)
 - Monitor EBB for further updates



Summary

- Winter Operations
 - Fully Subscribed
 - Monitor EBB for Restrictions/OFO's
 - Nominate Timely Cycle
- Summer Operations
 - Increased zone 2 due to generation loads
 - OFO's on peak days
- Continued Safe Reliable Operations
 - 24" ILI completed, 30" 2023
 - Continuous communications with ISO's, Interconnects, Point Operators
 - Scheduling and Gas Control support 24/7/365

